

# *Land Here, Lead Here*

GREENVILLE \* ARCOLA \* HOLLANDALE \* LELAND \* METCALF



## WASHINGTON COUNTY ECONOMIC ALLIANCE

*A Chamber & Economic Development Partnership*

Cary Karlson, Executive Director

Ph: 662-378-3141 / Cell: 662-378-7096

342 Washington Ave., Ste. 201 / PO Box 933

Greenville, MS 38702 - 0933

[www.wceams.com](http://www.wceams.com)

# Greenville Mid-Delta Airport

## *Connecting the Delta*





# Greenville Mid-Delta Airport

## About the Airport

- Located 3 miles north of central Greenville, MS
- Former Air Force Base
- Commercial air service provided by Boutique Air
- Daily flights to Nashville, TN and Dallas, TX



# Greenville Mid-Delta Airport

## Property Description

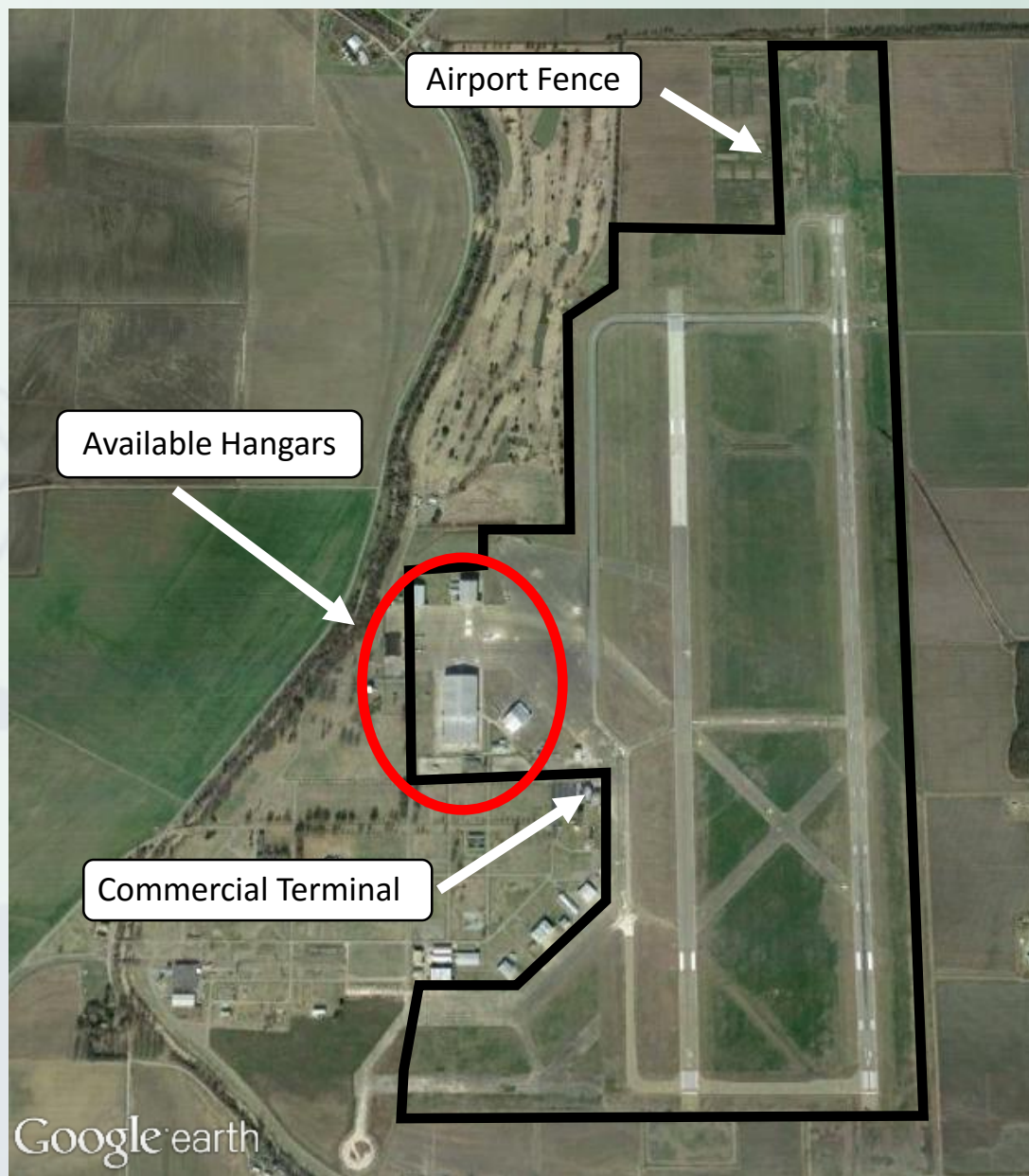
- 4 Hangars Available
- Buildings 173, 448, 449, & 450
- Sites are located at Greenville Mid-Delta Airport in Greenville, MS
- Owned by the City of Greenville
- Direct runway access





# Greenville Mid-Delta Airport

- Situated on 2,000 acres of land
- Control tower is manned 7:00 am-7:00 pm, 7 days a week
- 2 runways onsite
  - Primary runway 18L36R: Asphalt surface
  - 150 ft. wide x **8,001 ft. long**;
  - Fitted with **Precision Instrument Landing System**
  - Secondary runway 18R36L: Concrete & asphalt surface 150 ft. wide x 7,019 ft. Long





# Building 449





# Building 449

- Total Square Footage: 44,180
- Hangar Space: 30,080 sq. ft.(160'x188')
- Door Ht. & Clear Ht.: 43 ft.
- Door Width: 155 ft.
- Office Space: 8000 sq. ft.
- Hangar can accommodate up to a Boeing 737 aircraft



Exterior Hangar Door



Office Space Interior



Hangar Interior



# Building 450 Hangar





# Building 450 Backshop





# Building 450

- Total Square Footage: 212,700
- 2 Sections—Hangar & Backshop
- Hangar is 111,000 Sq. Ft. clear span.
- Door Dimensions: 43 ft. x 234 ft.
- Center Clear Ht.: 48 ft.
- Side Clear Ht.: 40 ft.
- Backshop is 72,000 sq. ft. on ground floor. 3 balcony sections provide 29,700 sq. ft. of office, storage and break room space.
- Center Clear Ht.: 28 ft.
- Column Spacing: 30 ft.
- Hangar can accommodate up to a Boeing 737 aircraft



Exterior Hangar Door



Backshop Interior



Hangar Interior



# Building 448





# Building 448

- Total Square Footage: 29,000
- Hangar Space: 28,800 sq. ft.(180'x 160')
- Door Ht.: 35 ft.(w/ tail door 45')
- Door Width: 160 ft.
- Center Clear Ht.: 50 ft.
- Side Clear Ht.: 20 ft.
- Hangar can accommodate up to a Boeing 757 aircraft





# Building 173





# Building 173

- Total Square Footage: 36,600 Sq. ft.
- Hangar Space: 22,400 sq. ft.(140'x160)
- Center Clear Ht.: 45 ft.
- Side Clear Ht.: 14 ft.
- Door Ht.: 30 ft. (40 ft. w/ tail door)
- Door Width: 158 ft.
- Office Space: 1,200 sq. ft.
- Storage/Workshop Space: 13,000 sq. ft.
- Hangar can accommodate up to a Boeing 727 Aircraft



Exterior Hangar Door



Hangar Interior



Hangar Interior



# Greenville Mid-Delta Airport

## Utilities

- Electrical service provided by Entergy
- Gas service provided by Atmos Energy
- Sewer service provided by the City of Greenville
- Water service provided by the City of Greenville





# Greenville Mid-Delta Airport Transportation Map

## Transportation

- Airport located off of North Broadway Ave. Extended
- 7 miles to US Hwy 82
- 80 miles to I-55
- 13 miles to Port of Greenville
- 2 Miles from Columbus & Greenville Railway
- 145 miles North to Memphis, TN
- 128 miles South to Jackson, MS

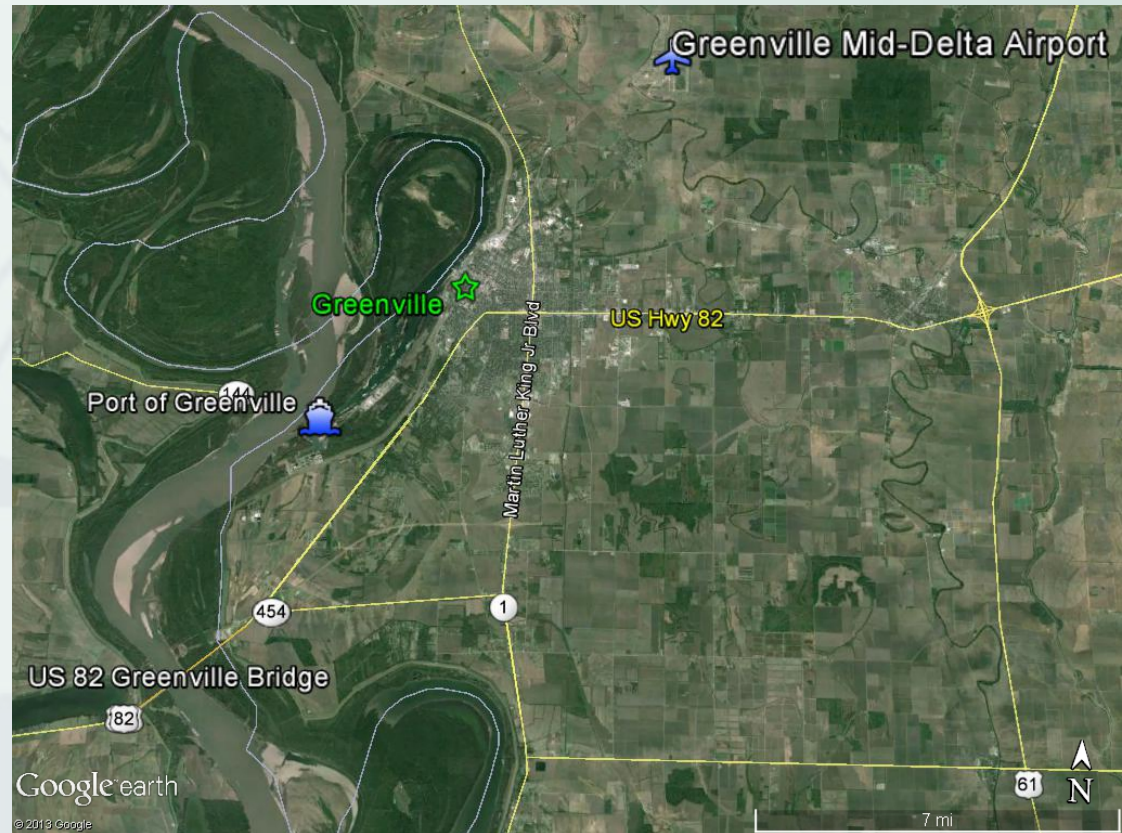




# Greenville Mid-Delta Airport

## Transportation

- Airport located off of North Broadway Ave. Extended
- 7 miles to US Hwy 82
- 80 miles to I-55
- 13 miles to Port of Greenville
- 2 Miles from Columbus & Greenville Railway
- 145 miles North to Memphis, TN
- 128 miles South to Jackson, MS





# Regional Map

- **Memphis, TN: 158 miles.**  
Pop: 652,050
- **Jackson, MS: 121 miles**  
Pop: 175,561
- **Little Rock, AR: 144 miles**  
Pop: 195,314
- **Shreveport, LA: 201 miles**  
Pop: 200,975
- **Baton Rouge, LA: 239 miles**  
Pop: 230,139
- **New Orleans, LA: 289 miles**  
Pop: 360,740
- **Dallas, TX: 386 miles.**  
Pop: 1.223 million
- **Birmingham, AL: 285 miles**  
Pop: 212,413
- **Mobile, AL: 309 miles**  
Pop: 194,914
- **Houston, TX: 440 miles**  
Pop: 2.145 million
- **Atlanta, GA: 428 miles**  
Pop: 432,427

